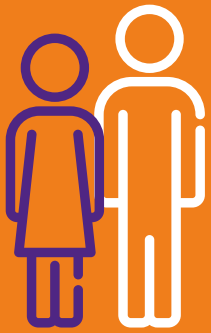


MERTON SOCIAL PRESCRIBING SERVICE

Social Prescribing is a way of linking patients in primary care with a range of local and non-clinical services to improve their health and wellbeing.

Please ask your GP on how to access the Merton Social Prescribing Service.



– Patients feedback following Social Prescribing appointment

“Having support within the local area made me feel like I could cope”

– Social Prescribing Coordinator feedback

“We can talk about their social life, finances, life at home, friends and family”

– Clinical Lead for Social Prescribing Merton & Wandsworth

“It’s less of a burden on general practice and makes us all work more effectively”

